

Highlights 2024



➤ How to find us



Innovate, Grow, Thrive – Welcome to Surrey Research Park

Surrey Research Park is a vibrant community where innovative startups and established businesses thrive.

Set in landscaped and rich biodiverse surroundings, we offer a range of space options for you to launch and grow your business. From co-working spaces in the Surrey Technology Centre and at Rocket-desk to versatile units up to 40,000 sq ft, the Park caters to a range of business needs.

Our spaces are ideal for fostering innovation in a setting that blends natural beauty with technological advancement. Plus, with flexible tenancy options and a supportive ecosystem, all underpinned by our connection to the University of Surrey, we offer more than just an address.

Our tenants also benefit from:



Instant membership to sector Cluster ecosystems offering unequalled networking, collaborations and access to funding opportunities



Unique opportunities to recruit and work with top talent from the University of Surrey, collaborate with world-leading institutions



Growth support opportunities for startups via SETsquared Surrey



Access to funding opportunities including via the S100 Angel Investors Club



Enhance your employee offering and strengthen employee engagement with our programme of social and networking events, and discounted gym membership at Surrey Sports Park, discounted child day care options and ample parking

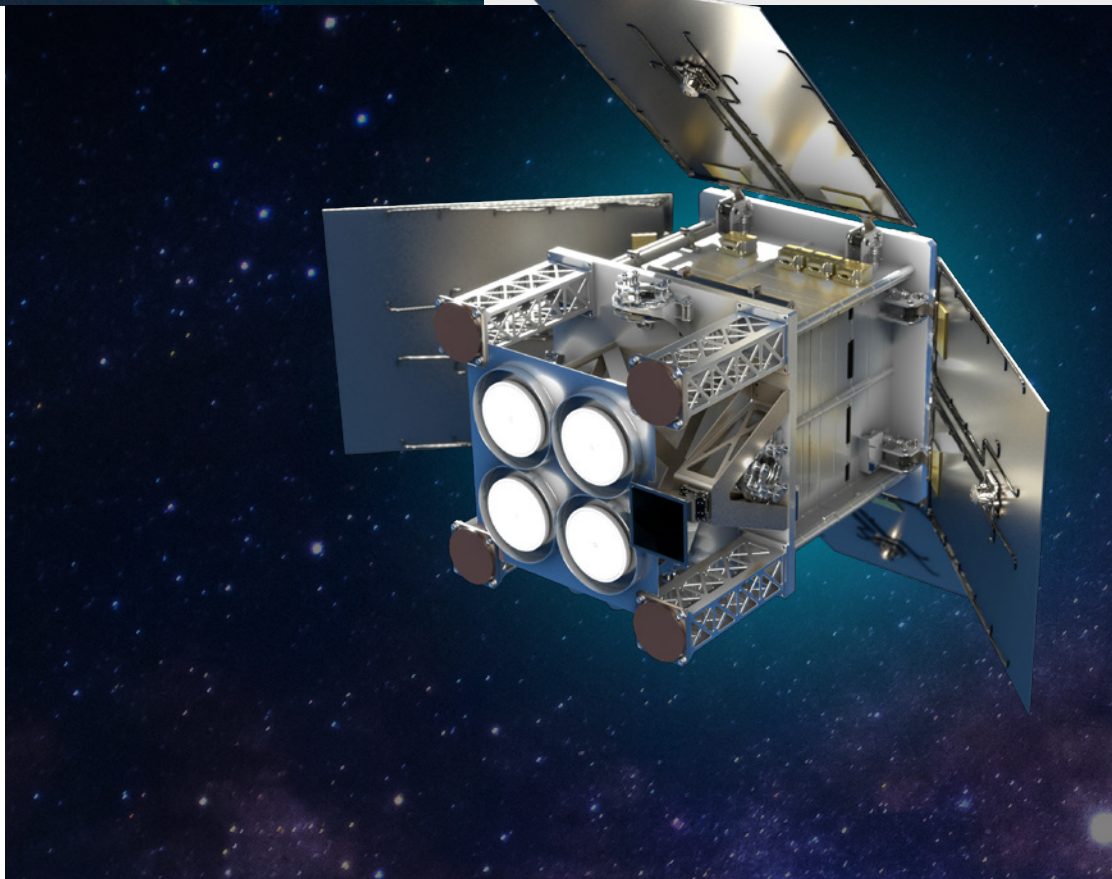


Let's Talk!

Scan the QR Code, email sales@surrey.ac.uk
or call +44 (0)1483 502003
or visit: surrey-research-park.com

Contents

4	Welcome
6	SRP in numbers
8	Human and Animal Health
16	Digital, SaaS and Games
24	Sustainability
30	Space Technology
36	Community
42	Talent



“

Looking ahead,
I'm hugely excited
about the future as
the University unveils
its new Vision 2041
strategy. This bold
long-term plan will
further strengthen
collaboration between
the University
and industry.

”



Explore more with *Highlights Extended*

Look out for QR codes throughout this magazine. Scan each one to access *Highlights Extended* — a collection of exclusive video interviews that take you behind the stories featured in these pages.



➤ Shaping the Future.

Welcome to the 2024 edition of our annual highlights from Surrey Research Park. In these pages, you'll discover a snapshot of some of the many exciting achievements of our vibrant business community over the past year – a pioneering community that continues to drive innovation and deliver positive social impact across the region and beyond.

In 2024, Surrey Research Park once again demonstrated its value as a national asset for innovation. As part of the University of Surrey and the wider Surrey Innovation District, the Park supported breakthroughs across health, AI, digital technology, sustainability, and space. Its impact was reflected in the inward investment from two global space companies that chose Guildford as their UK base, creating high-value jobs and strengthening the regional economy.

These companies recognised the value of our “go beyond space” offer – choosing the Park not just for its prestigious location, but for the collaborative ecosystem, access to top-tier talent, and opportunities to engage with world-class academics and facilities at the University of Surrey, across the Surrey Innovation District ecosystem and via the Space South Central sector cluster.

As Director of Surrey Innovation District, I have great pleasure leading a brilliant team that spearheads exciting initiatives across the Park, designed to drive collaboration and accelerate technological development.

These include the UK's first animal health business incubator, the CancerBusters campaign connecting university research with real-world application in oncology, and the Games and Innovation Nexus (GAIN) programme, advancing Guildford's global standing in interactive entertainment. The Surrey Women's Entrepreneurship Network (SWEN) also marked its first anniversary, with over 350 members joining in its first year.

Looking ahead, I'm hugely excited about the future as the University unveils its new Vision 2041 strategy. This bold long-term plan will further strengthen collaboration between the University and industry. Additionally, last year's signing of a Civic Agreement between the University of Surrey, Surrey County Council and local universities has formalised our joint commitment to improve the quality of life across the region by 2030, placing research, innovation and enterprise at the heart of a stronger, more inclusive local economy.

As you explore this publication, and discover stories of collaboration, growth and success, I encourage you to consider how your business could collaborate with the University to explore new opportunities. With our partners, we will continue to create opportunities for teams to thrive and businesses to grow at the Park. Together, we will drive innovation that delivers real-world impact.

Caroline Fleming

Director, Surrey Innovation District

➤ SRP Engagement in Numbers



200+

companies operating from the Park.



130hrs

of tailored expert startup development support delivered by SETsquared Surrey to participants in the UK's first animal health business incubator.



73

companies participating in SID Engagement programmes and SETsquared Surrey business incubator.



Director of Surrey Innovation District appointed to the UKSPA Board to champion the role of science and research parks in driving the UK's innovation.



20%

of resident companies with active research collaboration with the University of Surrey.



62

companies actively participating in four SRP-led business collaboration events.



150+

students participated in talent matching tours of the Park.



350

women entrepreneurs and their supporters in our network, including 97 women-led businesses.



170+

space-related companies Connected to Surrey Research Park through Space South Central regional space cluster.



3,627

industry interactions for the Games and Innovation Nexus (GAIN) programme.



➤ Human and Animal Health

The Surrey Research Park community is home to world-leading health companies and research teams that are shaping the future of healthcare for both humans and animals.

Their work is improving lives, advancing scientific understanding and delivering positive impact across society.

Across the Park and the wider Surrey Innovation District, a growing number of organisations are developing breakthrough technologies that span pharmacy, diagnostics, oncology and VetTech. From new natural remedies (The Naked Pharmacy) to AI-powered blood analysis (ANGLE plc) and advanced imaging tools in veterinary surgery (Aura Veterinary), the scope of innovation throughout 2024 was exceptional.

In early 2024 we launched the UK's first animal health business incubator. vHive was dedicated to accelerating the development of veterinary technologies for both pets and livestock.

With faster routes to market than human healthcare and clear relevance to food security, these innovations are playing an essential role in supporting healthier communities.

Later in the year, the Park spearheaded CancerBusters, a thematic campaign uniting cancer experts at the University of Surrey with global industry leaders in oncology and regional healthcare representatives to share insights and drive progress in cancer detection, treatment and care.

Many of these innovations were made possible through close collaboration with the University of Surrey, connecting cutting-edge research with commercial application.

Together, these 2024 accomplishments show how Surrey Research Park and the wider Surrey Innovation District ecosystem are enabling collaborative health innovation and delivering real-world impact far beyond Surrey.

“

The Surrey Research Park community is home to world-leading health companies and research teams that are shaping the future of healthcare for both humans and animals.

”



The Naked Pharmacy®



The Naked Pharmacy



A year defined by prestigious recognition, product breakthroughs, and continued innovation saw The Naked Pharmacy go from strength to strength in 2024. Based at Surrey Research Park, the company continues to redefine what it means to be a pharmacist-led natural health brand, driven by a commitment to science, sustainability, and customer centricity.



Their approach combines scientific rigour with natural efficacy-a formula that has earned them both a loyal customer base and widespread acclaim.



Located on the
Surrey Research Park



The Naked Pharmacy capped off a year of recognition when CEO Kevin Leivers was named Best Equity-Backed Entrepreneur of the Year (South East) at the Allica Bank Great British Entrepreneur Awards, held in November at Grosvenor House, London. This prestigious accolade celebrates entrepreneurial leadership, growth, and vision.

This latest recognition came the week after two major wins for the team at the Surrey Business Awards: Best Customer Service and SME Business of the Year.

These awards reflect the company's exciting journey, which began as a startup in Surrey Research Park's SETsquared Surrey business incubator. Today, the company has grown into a thriving and successful SME headquartered in the Park's flagship Surrey Technology Centre.

Founded with the goal of bridging the gap between pharmacy and natural health, The Naked Pharmacy researches, develops, and manufactures its own range of pharmacist-formulated supplements in the UK. Their approach combines scientific rigour with natural efficacy-a formula that has earned them both a loyal customer base and widespread acclaim.

Among the highlights of the year was the launch of Ashwadisiac, a natural remedy developed specifically for women's health. The company also introduced compostable packaging across its range, reaffirming its commitment to sustainability and conscious consumerism.

As a result of its success and need to increase production, in 2024 The Naked Pharmacy expanded into an additional unit in the Surrey Technology Centre leveraging the flexibility of the Park's agile licensing model, which was designed specifically to meet the needs of scaling businesses.

CancerBusters

Across Surrey Research Park and the wider Surrey Innovation District there are lots of organisations working to enhance cancer diagnosis, treatment, and care, to improve patient outcomes.

CancerBusters was launched in November 2024 by the Surrey Research Park team, part of the University of Surrey, to harness the power of collaboration and shared knowledge in tackling one of society's most pressing challenges.

With one in five people expected to develop cancer in their lifetime, the campaign was built on a simple mission: change lives through collaboration.



The initiative united leading cancer researchers from the University of Surrey with pioneering companies across the Park. Its goal was to raise the profile of Surrey as a cancer innovation hub, foster meaningful partnerships, and demonstrate the impact of multidisciplinary approaches in the fight against cancer.

Representing the University of Surrey were two key research groups: Dr Adam Frampton, Associate Professor in Surgical Oncology and Co-Chair of the Cancer Research Network, and Dr Robert Kerrison, Senior Lecturer in Cancer Care and Co-Chair of the Cancer Care Research Network. Their work spans surgical innovation, early detection, and reducing inequalities in access to cancer care.

Companies from across Surrey Research Park also played a central role, highlighting new pioneering diagnostics, therapies, and tools for both human and animal health. Participants included, SiSaf Ltd, Datar Cancer Genetics, ANGLE, Aura Veterinary and the recently established Surrey Academic Health and Care Partnership.

By connecting science, business, and care, CancerBusters demonstrated how the Surrey Innovation District ecosystem, with Surrey Research Park at its heart, is driving innovation by enabling collaboration and knowledge exchange to deliver a positive societal impact.



Meet the CancerBusters



ANGLE plc

A pioneer in cancer diagnostics, ANGLE plc continued to make significant progress in 2024 with its Parsortix® liquid biopsy technology. ANGLE is developing less invasive ways to monitor and guide cancer treatment. Liquid biopsy is an innovative approach that uses a simple blood sample to capture and analyse cancer cells circulating in the bloodstream. This offers real-time insights without the need for surgical tissue biopsies. In 2024, ANGLE expanded its clinical collaborations, including with AstraZeneca and Eisai Inc. These studies demonstrated how liquid biopsy can be used to track cancer progression and adapt treatments to individual patients more effectively. As part of CancerBusters, ANGLE showcased the potential of its technology to transform cancer care through earlier detection, better monitoring, and personalised treatment strategies.



Datar Cancer Genetics

In 2024, Datar Cancer Genetics cemented its position as a global leader in precision oncology, contributing extensively to academic and clinical understanding of cancer biology.

Last year, Datar published multiple peer-reviewed studies in leading journals. Notably, their research addressed hard-to-treat cancers such as pancreaticobiliary and uveal melanomas, and evaluated how gene expression and plasma-based testing can improve therapy decisions.



Aura Veterinary

AURA Veterinary is a leading UK animal hospital specialising in comprehensive cancer care for pets. In June 2024, the company and the University of Surrey's School of Veterinary Medicine initiated a collaborative project to develop and validate a Canine Oncology Proxy-Reported Outcome Measure (CO-PROM). Funded by the Morris Animal Foundation with a grant of approximately £100,000, this tool assesses chemotherapy-related side effects and quality of life in dogs undergoing treatment.

By adapting methodologies from human medicine, where patient-reported outcome measures have enhanced personalised oncology care, the CO-PROM seeks to provide veterinarians with reliable data to improve symptom management and patient well-being.



SiSaf

SiSaf Ltd combines fully integrated state-of-the-art research labs and bioanalytical facilities with a clear mission: to improve how medicines are delivered in the body. Its Bio-Courier® platform supports the development of more stable, targeted treatments for a wide range of hard-to-treat conditions, including cancer. As part of the CancerBusters campaign, the company began exploring a Knowledge Transfer Partnership with the University of Surrey.

Surrey Academic Health and Care Partnership (SAHCP)

Launched in summer 2024 this partnership brought together the University of Surrey, Surrey Heartlands NHS, and Surrey County Council to tackle pressing challenges in population health, social care, and primary care. As part of its launch, the partnership announced a £300,000 funding opportunity for Surrey-based businesses developing innovative health technologies or services. The partnership aimed to connect local companies with academic and clinical expertise to drive evidence-based solutions with real community impact.



vHive / Zoetis

UK's first animal health and VetTech business incubator

The UK's first business incubator dedicated solely to animal health launched at Surrey Research Park in 2024, establishing a new national platform for veterinary innovation.

Delivered by SETsquared Surrey, the Park's business incubator, and backed by global animal health leader Zoetis, the vHive programme supports startups developing technologies to improve the health of pets and livestock.

The programme, which supported 11 companies across its first and second cohorts last year, offers six months of fully funded incubation, including access to mentoring, business development, investment readiness training, and office facilities in SETsquared Surrey, located in the Park's flagship Surrey Technology Centre. Collectively, participants received over 130 hours of expert support in its first year.

“
vHive has quickly established itself as a vital launchpad for innovation in this fast-moving sector.
”

By focusing exclusively on animal health and VetTech, vHive has created a highly specialised environment where entrepreneurs can access both industry-specific expertise and broader business support.

Participants retain full IP ownership, and the programme does not require equity, making it especially attractive to early-stage ventures. Startups also benefit from links to research expertise, pilot opportunities, and collaborations that are typically hard to access in the veterinary sector. As well as all the benefits enjoyed by members of Surrey Research Park's innovative community.

In the UK, a 2024 review by the Competition Markets Authority (CMA) into veterinary care valued the market at £2 billion. The expected continued growth across all areas of animal care is widely attributed to the growing medicalisation of pets and the deepening understanding of the human-animal bond. With interest growing in the medicalisation of pets and improved livestock health, the global animal health market is forecast to grow to approximately £337 billion by 2032,





making it especially attractive to early-stage ventures. Startups also benefit from links to research expertise, pilot opportunities, and collaborations that are typically hard to access in the veterinary sector.

In its first year, vHive supported two cohorts of companies with businesses ranging from pre-seed stage to Series A, with several achieving significant funding milestones during their time on the programme. For Zoetis, the initiative offered a route to explore innovative solutions outside its core R&D operations while building stronger links with the UK's startup ecosystem.

The vHive business incubator has quickly established itself as a vital launchpad for innovation in this fast-moving sector. By combining industry engagement, academic strengths, and entrepreneurial support, the programme continues to attract some of the most promising VetTech startups in the UK and beyond. The incubator remains active, with participating companies going from strength to strength as they secure funding, pilot new technologies, and bring products closer to market.

vHive in Numbers

130

Hours of expert support to help accelerate vHive Animal Health Startups

12

Companies onboarded to the programme in 2024

12

animal health specific mentors and investors supporting the programme

10

research projects supported

4

Animal Health Sector workshops and events



Spotlight on the Startups

From groundbreaking innovations to market-ready solutions, vHive is nurturing some of the UK's most exciting businesses in the animal health and VetTech sectors. These pioneering startups are transforming veterinary care through cutting-edge technologies spanning diagnostics, telehealth, wearables, and AI-powered solutions.

First Cohort

MI:RNA Diagnostics – Venture stage startup raised £4.4m in 2024. Advancing molecular insights diagnostics for veterinary care.

Zonova – This exciting startup is pioneering new antibacterial and antiviral coatings for veterinary equipment. In 2024, Co-founder and CEO Dr Georgia Fleet was recognised with a UKRI Women in Innovation Award.

Vidivet – This venture stage startup raised over £2m in 2023. The company's mission is to redefine TeleHealth consultations with a cutting-edge platform specifically for vets and pet owners.

Aviasenze – A startup developing sensor technologies to monitor and enhance the welfare of poultry.

Innovent – This company is applying sensors and AI to improve the health and wellbeing of pigs and cattle.

Second Cohort

IntelliVet – The team is innovating an AI-powered diagnostic tool designed to support vets with complex disease identification.

Moggie – A visionary team developing wearable health tech for cats, offering real-time monitoring and preventative care insights via an app.

AITEM – An Italian startup building a generative AI “co-pilot” for veterinarians to support diagnostic decisions.

AGA2tech – Specialists focused on reducing antimicrobial resistance in poultry through antibiotic alternatives.

CanCan Diagnostics – This startup specialises in cancer diagnostics for ageing dogs, supporting earlier and more accurate detection.

Vidiia – A startup accelerating the development of rapid diagnostic assays to enable faster disease detection in animals.



“

From groundbreaking innovations to market-ready solutions, vHive is nurturing some of the UK's most exciting businesses in the animal health and VetTech sectors.

”



AURA Veterinary

Aura Veterinary, a specialist animal hospital based at Surrey Research Park, marked a year of significant innovation, research, and clinical accomplishments in 2024.

From a major imaging breakthrough and diagnostic milestone to industry-leading research collaborations, the hospital continued to strengthen its position as world-leading veterinary oncology and soft tissue specialist.

One of the most significant developments of the year was Aura Veterinary's partnership with Arthrex Vet Systems, which brought Near-Infrared Fluorescence (NIRF) imaging technology to their animal hospital at the Park.

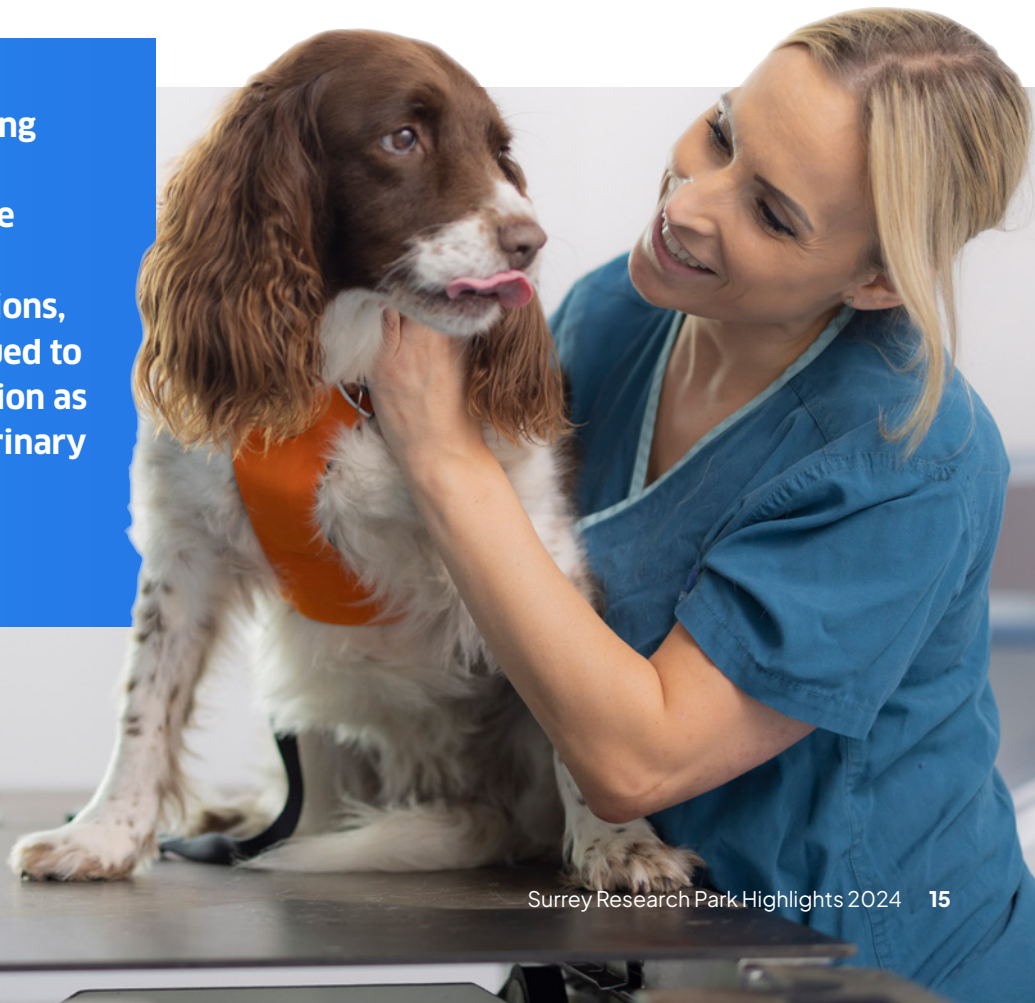
This positioned Aura as the UK's first veterinary 'Centre of Excellence' for NIRF, enhancing surgical outcomes through real-time visualisation of blood supply, lymphatic mapping, and tumour detection. The technology, more

commonly used in human healthcare, is now available to all Aura patients at no extra cost.

Aura also welcomed its 15,000th patient and completed its 6,000th CT scan in 2024, highlighting the hospital's role as a major referral centre for complex cases.

Alongside these achievements, Aura continued to deepen its research collaborations with the University of Surrey's School of Veterinary Medicine. In June, the organisations launched a joint study to develop and trial a Canine Oncology Proxy-Reported Outcome Measure (CO-PROM), which is a validated tool to assess chemotherapy-related symptoms and quality of life in dogs. The project is funded by the Morris Animal Foundation with a grant of approximately £100,000, and is adapted from proven methodologies in human oncology to support more personalised and responsive cancer care.

From a major imaging breakthrough and diagnostic milestone to industry-leading research collaborations, the hospital continued to strengthen its position as world-leading veterinary oncology and soft tissue specialist.



➤ Digital, SaaS and Games

In 2024, digital ventures across Surrey Research Park and the wider Surrey Innovation District made major strides in some of the UK's fastest-moving technology sectors. From next-generation neurostimulation and behavioural AI to advances in semiconductor testing and digital health, this has been a future-defining year for ventures turning advanced research into practical solutions.

Surrey's long-standing role in the games industry gained further recognition, with Guildford reaffirmed as a national hub for games innovation. Through the Games and Innovation Nexus (GAIN) programme, new funding, academic collaboration and specialist facilities are helping creative studios and researchers drive forward one of the UK's highest-growth sectors.

Cognite Neurotechnology is reimagining what's possible in education and cognitive enhancement, using AI-guided neurostimulation to improve focus, memory and learning outcomes. Their research-led approach is opening new pathways for how we train our brains in a world increasingly shaped by AI.

In the world of advanced engineering, ipTEST continues to lead in high-performance semiconductor testing. With award-winning equipment now in global demand, their work is supporting the shift towards electric vehicles and cleaner energy systems by improving the safety and reliability of power electronics.

Securium is addressing the growing complexity of online threats with a pioneering blend of psychology, behavioural science and AI. By focusing on text-based harms, the company

is equipping organisations with tools to better detect, understand and mitigate risk across digital platforms.

At the intersection of healthcare and automation, OH Assessment is transforming occupational health services with the support of fellow Park-based business, Comnoco. Their collaboration has introduced secure, smart systems that enable more responsive and efficient healthcare delivery at scale.

These companies demonstrate the depth of talent, purpose and innovation within the Park's digital ecosystem. Supported by the University of Surrey and SETsquared Surrey, they are applying advanced research and technical capability to improve lives, create economic opportunity and address global challenges with confidence and clarity.



These companies demonstrate the depth of talent, purpose and innovation within the Park's digital ecosystem.



Morpheus Fluid

In 2024, Morpheus Fluid Ltd, a pioneering spin-out from the University of Surrey, officially launched at Surrey Research Park, bringing a revolutionary approach to Computational Fluid Dynamics (CFD). By applying mathematical algorithms originally developed to model the cosmos, the company is delivering unparalleled precision for businesses across aerospace, automotive, and healthcare sectors.

Morpheus Fluid's next-generation CFD technology is transforming modelling of fluid dynamics with the goal of providing businesses with faster, more accurate simulations, reducing the time and cost of solving complex fluid dynamics challenges.

Astrophysics Meets Industry

Founded by Professor Justin Read, an award-winning astrophysicist, and Dr Linghan Li, a computational modelling expert, Morpheus Fluid built on over a decade of research into the behaviour of fluids and their interaction with physical forces. The fusion of astrophysical insight and computational expertise led to the creation of a mesh-less CFD technology, eliminating the constraints of traditional 3D mesh models.

“

The techniques we've used to understand how matter behaves on a cosmic scale are now helping us solve complex fluid dynamics challenges here on Earth. This is fluid modelling at a level of precision that's never been possible before, helping businesses solve problems faster and more accurately than ever.

”

Professor Justin Read

Co-founder and Co-CEO of Morpheus Fluid Ltd.

Throughout 2024, Morpheus Fluid's technology has proven its potential in the aerospace industry, where the company has tackled critical challenges such as aquaplaning and water ingestion during aircraft take-offs and landings. By offering ultra-high-fidelity digital simulations, the technology has enabled engineers to refine aircraft safety measures and aerodynamic designs with unprecedented accuracy.

Scaling Innovation

Beyond aerospace, Morpheus Fluid has explored applications across multiple industries, using its advanced fluid modelling techniques to create digital twins and drive efficiencies in engineering and manufacturing. From automotive aerodynamics to optimising medical devices, the possibilities have been vast.

The company has been supported by Surrey Research Park's SETsquared business incubator, part of the UK's leading business incubator partnership, and secured funding from Innovate UK to accelerate its commercial journey. As part of the Surrey Research Park ecosystem, the company has benefited from a thriving innovation community and leveraged opportunities via Space South Central – the UK's largest regional space cluster, which the University of Surrey helped found.

An exciting year of games innovation and skills development in Surrey

START

6 June

Opening of the Games Innovation Zone & Academic Launch Event

Representatives from the three partner universities gathered at the University of Surrey to officially open the Games Innovation Zone and explore collaborative opportunities via GAIN.

12 June

Community Open House

Introduction to the Games Innovation Zone facilities and an opportunity for the local games community to learn about opportunities to use the space.

26 September

Surrey Schools Career Talk

Attended by 20 young people aged 13 – 18 from five schools. Participants played games and joined a talk on AI by Prof Wenwu Wang from the University of Surrey.

15 October

Festival of Skills

Showcased GAIN at the Festival of Skills connecting young people with higher education options for roles in the Games sector.



Securing Guildford's Position as the UK's 'Hollywood' of Games

The Games and Innovation Nexus (GAIN) programme, launched at the University of Surrey, was created to address key challenges facing the UK gaming sector.

Backed by £2.3 million in funding, GAIN connects academic researchers with games developers to explore new technologies, support innovation, and accelerate commercial impact. The programme links the Guildford and Leamington gaming clusters and is funded through a collaboration of Research England, the University of Surrey, University for the Creative Arts, University of Warwick, Surrey County Council and Warwickshire County Council.

As part of the project a new Games Innovation Zone was opened at the University of Surrey's Stag Hill Campus. This facility is designed for collaborative work and for testing and playing games.

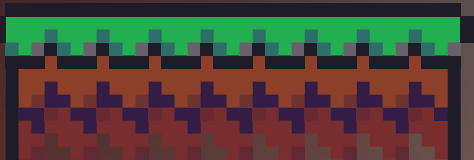
During 2024, GAIN delivered around 30 events, funded 19 collaborative projects, and recorded 3,627 industry interactions. It engaged 212 academics and 88 games studios. You can discover more about the programme's key accomplishments in the 2024 timeline graphic above. For more details and to see a video about the GAIN programme, scan the QR code.



16 October

Career Pathways for Women in Games

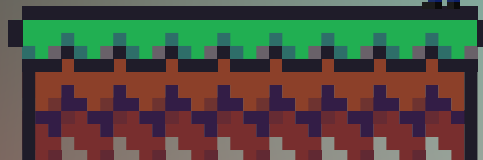
Over 100 people attended a GAIN talk and industry-led panel discussion designed to assist women seeking a career in the games sector.



20 November

Networking 'n' Nostalgia

Representatives from local games studios joined academics, students and members of Guildford Borough Council for an afternoon of retro game play and networking.



4 November

Surrey Choices Career Talk

Around 20 neurodivergent young people aged 15–17 had an opportunity to explore a future in the games sector with the co-founder of Autser, a local games developer producing social-skills games for people with autism.



22 November

Guildford. Games Awards

We were thrilled to support and be part of this celebration of Guildford's Games community and present the education award.

YOU WIN!



18 November

Electronic Arts (EA) Career Talk

Senior leaders from EA – the world-renowned Guildford-based Games Company – gave an industry talk to more than a dozen postgraduate researchers applying for a paid placement opportunity with the company. As a result of this event, EA secured the talent it sought.

The opening of the innovative Games facilities made headlines when it was reported on by BBC News.



Watch a video about the GAIN programme.





Pioneer of semiconductor testing equipment, ipTEST was awarded its second consecutive King's Award in 2024. Regarded as the UK's highest accolade for business, the company received the award for International Trade after growing its exports more than fivefold in an exceptionally short period.

ipTEST, which has been based at Surrey Research Park since 2021, produces semiconductor testing equipment widely used in the manufacture of electric vehicles. During the assessed period in 2023, the company saw a remarkable 553.53% growth in exports, with close to 100% of its products and services delivered to markets in Southeast Asia, China and Europe.

To mark the achievement, ipTEST's Sales and Marketing Director, Nick Dajda, attended a royal reception at Windsor Castle. Hosted by His Majesty The King and attended by the Duke and Duchess of Gloucester and the Duke of Kent, the event brought together many of the UK's leading enterprises.

The latest award builds on ipTEST's 2023 success, when the team received the King's Award for Innovation for its pioneering work enhancing the test capabilities available for high-power Silicon Carbide (SiC) and Gallium Nitride (GaN) semiconductors.

"This recognition is a testament to the dedication and expertise of our team, whose work has propelled ipTEST to the forefront of the global market," said a company spokesperson. "Our innovative solutions are meeting the evolving demands of the semiconductor industry, helping us remain a trusted partner worldwide. As we celebrate



this milestone, we're more focused than ever on driving forward new advances in semiconductor testing and maintaining the highest standards for our international customers."

High-power electronic chips are essential components in electric and plug-in hybrid vehicles. Testing semiconductors involves applying very high voltages and electrical currents. These often exceed typical operating conditions and are required to ensure they can withstand real-world use, maintain battery life, and remain safe.

The rise of wide bandgap SiC and GaN semiconductors has opened new possibilities for energy efficiency and performance in sectors ranging from transport to data centres. However, these chips switch currents at much higher speeds than traditional silicon-based devices, which conventional testers struggle to measure accurately.

To meet this challenge, ipTEST developed the DS5 tester, capable of operating at the highest speeds and delivering fast, dynamic testing. It was the creation of the DS5 that secured the company its first King's Award in the Innovation category in 2023.

The company saw a remarkable 553.53% growth in exports, with close to 100% of its products and services delivered to markets in Southeast Asia, China and Europe.



Cognite Neurotechnology Ltd is on a mission to enhance human potential by using pioneering neurostimulation techniques combined with advanced AI to improve how our brains learn, focus, and perform.

Born from over two decades of academic research, Cognite Neurotechnology began operations in 2022. Since then, the company has been steadily growing its commercial presence while deepening its scientific foundations.

The company operates from Surrey Research Park, where it is a member of the SETsquared Surrey business incubator, part of the award-winning SETsquared partnership.

Professor Roi Cohen Kadosh, Head of the School of Psychology at the University of Surrey is the founder, CEO and Chief Scientific Officer at Cognite Neurotechnology.

As a world-leading academic in neuropsychology and with previous roles at University College London and the University of Oxford, he is globally recognised for his pioneering work on brain stimulation and cognitive enhancement.

Cognite is initially focusing on the education market, aiming to enhance learning and attention by directly targeting brain function, an area largely overlooked by traditional education technology.

Blending neurostimulation with AI

Cognite Neurotechnology's product is a mobile device that can be worn as a hat or helmet. Powered by a battery, it delivers painless, low current pulses to stimulate specific brain regions while the user studies or carries out a learning task.

One of the most impressive features of Cognite's innovation lies in how the team has integrated neurostimulation with AI. The company's patented technology leverages AI and cutting-edge academic research to tailor the delivery of the stimulation protocols to match users' brain profiles. This maximises the cognitive benefits from each use of the device.

Recently, the company's technology was put to the test as part of a project funded by the UK Ministry of Defence. Concluding in 2024, the study saw Cognite's technology deployed to remotely improve users'



“

I'm really grateful to SETsquared Surrey for the ability to access mentors that have a lot of real-world experience. It's really good to have great minds that can help me to shape the business in the best possible way.

”

Professor Roi Cohen Kadosh

Head of the School of Psychology at the University of Surrey is the founder, CEO and Chief Scientific Officer at Cognite Neurotechnology.

attention and focus, while they were at home. The success of this project now paves the way for broader applications in learning, memory enhancement, and educational performance.

SETsquared Surrey: Supporting Cognite's Growth

Through SETsquared Surrey membership, Roi and the Cognite team have benefited from one-to-one expert business strategy mentorship, investor-readiness training and access to unique funding opportunities.

The Age of the Elite Learner

By unlocking the full potential of the human brain to learn and think critically, Cognite's technology heralds a future where more people can be elite learners. These people will be equipped to review, critique and improve the AI systems that increasingly shape our lives, helping to overcome big challenges and enable us to build a more informed and capable society.



Occupational Health & Comnoco



An exciting collaboration between two member companies in SETsquared Surrey, Surrey Research Park's business incubator, has helped accelerate the digital transformation of a fast-growing occupational health business.

In 2024, OH Assessment partnered with software specialist Comnoco to complete the first stages of a digital roadmap, enabling the company to scale sustainably and deliver services more efficiently – paving the way for further innovation.

Founded by Magnus Kauders, OH Assessment provides expert-led, responsive occupational health services that help businesses manage and reduce health-related risk in the workplace.

Driven by a goal of improving efficiency and transforming the occupational health sector to support sustainable growth, Magnus sought specialist input to manage operational complexity. He was introduced to Stuart Malt, founder of Comnoco, at a SETsquared Surrey networking event. Stuart's background in software development and process automation made him an ideal partner to support OH Assessment's next phase.

Initial conversations quickly evolved into a structured digitalisation plan. Stuart worked closely with the OH Assessment team to deliver a cost-effective, phased transformation roadmap, starting with automating core administrative processes to create capacity for further expansion. Robust data security was a key priority, particularly given the business's handling of special category health information.

Innovation in a Traditionally Risk-Averse Sector

Occupational health is often considered a conservative, risk-averse field, where service models can be slow to evolve. OH Assessment identified an opportunity to lead the sector in digital service delivery by integrating proven technologies that reduce duplication, increase speed, and maintain compliance without compromising human oversight.

The company plans to build on its 2024 digital achievements by exploring the use of AI to support clinical decision-making – potentially becoming one of the first providers in the sector to deploy advanced technologies in a medical setting.

Enabling Growth and Service Excellence

The collaboration has already delivered results. By automating administrative processes, the business has been able to accelerate recruitment, bring forward milestone activities, and further enhance service delivery. Customers will benefit from faster processing times, more consistent reporting, and a streamlined experience.

"Digitalisation with Comnoco has turbocharged our growth," said founder Magnus Kauders. "We're building our expert team, enhancing our service offering, and staying ahead of demand."

With this transformation underway, OH Assessment is now well positioned to lead digital change within the occupational health industry – a journey made possible through a trusted partnership within the SETsquared Surrey ecosystem.





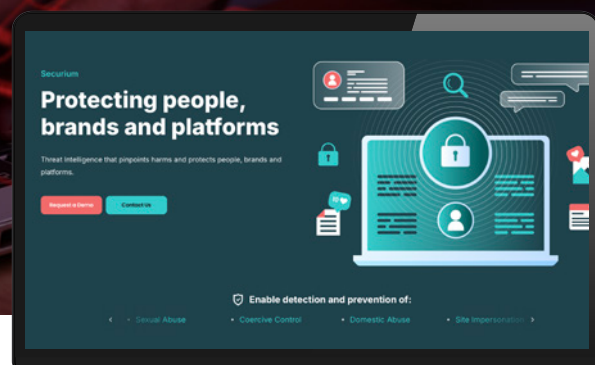
Securium is a multi-award-winning deep tech company on a mission to prevent online harms, financial, mental, and physical, by combining behavioural science and artificial intelligence.

At a time when online threats, fraud, and copyright breaches are growing more sophisticated, Securium is providing law enforcement, brands and platforms with a smarter, more targeted approach to identify and reduce online risks.

Securium was founded by Dr Anna Vartapetian at the University of Surrey, following her postgraduate studies.

Driven by Anna's desire to use technology for good, Securium differentiates itself from competitors by focusing on how text evidences such problems, rather than images or videos.

The company's pioneering solution draws on psychology and behavioural science, with AI used to enhance, not replace, human insight. The result is a powerful, explainable system that helps users cut through huge volumes of data to detect likely online harms with greater speed and accuracy.



In 2023, Innovate UK recognised Anna's contribution to women's entrepreneurship with a purple plaque displayed at the University of Surrey. The Women in Innovation Awards aims to boost female entrepreneurs and find and support women who are "change-makers and innovators". As a winner of the award, Anna received a £50k business cash injection as well as opportunities for business coaching and support. The cash award was used to fund further development and refinement of Securium's offerings, last year.

2024 started with Securium joining Bethnal Green Ventures, Europe's leading early-stage tech for good venture capitalists. Bethnal Green Ventures invests in ambitious and diverse founders who use technology to create positive impact at scale. Positive outcomes of that have led to an investment funding round with some early-stage angel investment via the University of Surrey-run S100 angel investor club.



➤ Sustainability

The need to urgently respond to the climate crisis is not only a challenge, but also a powerful catalyst for technological innovation. Across the UK, organisations are developing solutions to cut emissions, conserve resources, and build more resilient ways of living and working. Nowhere is this more apparent than at Surrey Research Park.

From AI-powered renewable energy systems to biodiversity intelligence and low-carbon food alternatives, businesses based at the Park are advancing some of the most exciting and impactful areas of UK sustainability.

Their innovations are designed not just to reduce emissions, but to improve lives, support global supply chains, and create a brighter future for all. Whether decarbonising heat and transport, scaling sustainable manufacturing, or improving how nature is measured and protected, these companies demonstrate that scientific and commercial progress are inseparable.

Collaboration plays a vital role in this success. Many of the sustainability breakthroughs being driven from the Park have been made possible through partnerships with the University of Surrey and the wider Surrey Innovation District ecosystem. From access to leading academic expertise and national research funding, to student-facing initiatives and knowledge exchange, these connections create unique opportunities for business that support growth.

All these exciting examples demonstrate that Surrey Research Park's vibrant community offers the right environment, partnerships, and momentum for businesses working to shape a cleaner, more sustainable world.



Love Struck

Blending Innovation, Sustainability and Scale



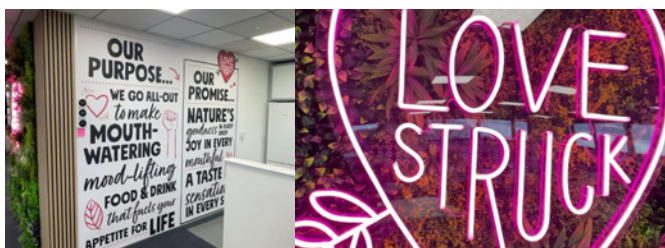
Since joining Surrey Research Park's innovation community in 2018, Love Struck has evolved into a fast-scaling B Corp brand at the intersection of food, technology and sustainability.

Specialising in pre-portioned smoothies, milkshakes and soups, the company is driven by strong social values and a mission to reduce its environmental impact through continuous innovation.

In 2024, the business reached several major milestones. It achieved around £10 million in turnover, relocated to a larger headquarters on the Park, pioneered an industry-first sustainable paper packaging solution, and integrated AI tools into several aspects of its operations. The company also played an active role in Park-led ESG initiatives.

Love Struck operates with a lean team, but it delivers at scale, managing a complex supply and distribution network across multiple continents, while working continuously to reduce food miles. The company sources quality fruit and vegetables and manufactures in the UK, Poland and Chile, which it exports to the US, Europe, the Middle East and Australia, supplying its smoothies and soups to cafés, gyms, hotels and major retailers including Ocado in the UK.

Last year's move into a larger office on the Park's Huxley Road was an especially notable milestone for the Love Struck team. Just a stone's throw from their original unit, the new space offers additional meeting rooms and a development kitchen, giving the team the perfect environment to innovate and showcase products to clients. Love Struck's continued presence at the Park demonstrates how Surrey Research Park is well placed to support growing businesses to scale without disruption.



Pioneering Packaging to Cut Plastic Waste

Also, in 2024 the company made a significant leap towards reducing its reliance on plastic packaging. The need to cut plastic has always been an ambition but was underlined in a recent environmental impact study. To overcome this challenge, the company developed a groundbreaking paper packaging solution suitable for frozen, moisture-rich ingredients. An industry first and now under trial, the new packaging will help the company fulfil its goal of removing plastic from the product completely within the next 24 months.

The company has also embraced new technologies to support its efficient operations. AI tools are now used to support supply chain optimisation, generate marketing content and visuals, and analyse customer feedback. These digital capabilities are helping the company grow without impacting overheads.

Looking ahead, Love Struck will continue its journey to carbon net-zero and expand its international markets. With innovation driving everything from packaging to operations, the company is well placed for continued growth in the global food and drink sector.

“

2024 was an important year for us. We moved into a bigger space, strengthened the team, made big steps forward in sustainability with the development of our paper packaging and we incorporated AI technology to support our efficiency.

”

Paul Longega

Managing Director of Love Struck



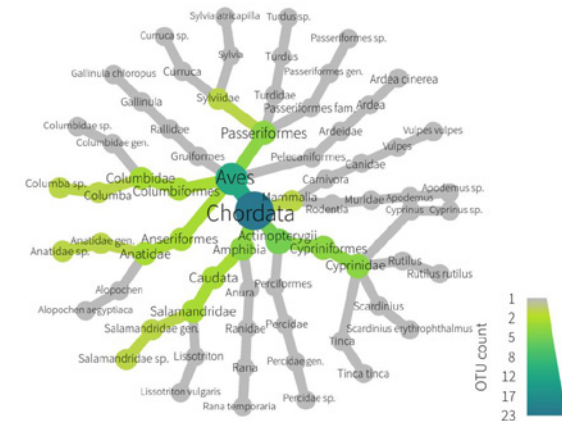
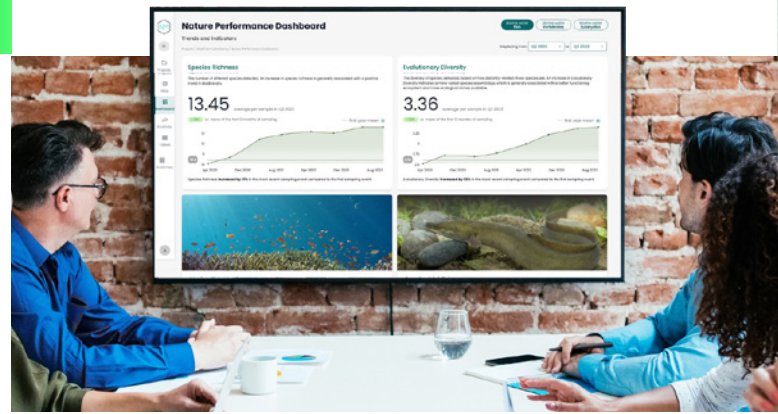
In 2024, NatureMetrics secured its place on the global stage by being named a finalist in the prestigious Earthshot Prize. Selected from thousands of innovators worldwide, the Surrey Research Park-based company stood out for its pioneering use of environmental DNA (eDNA) to monitor biodiversity at scale. The judges recognised its potential to deliver meaningful global impact, helping to propel NatureMetrics increasing the company's brand visibility and paving the way for new opportunities.

Founded in 2015 and based at Surrey Research Park since 2021, NatureMetrics is a global leader today in biodiversity monitoring and nature intelligence. Its patented eDNA technology allows organisations to measure and report on their impact on nature using trace genetic material left by species; everything from microscopic bacteria to majestic blue whales.

Although the company did not win the overall Earthshot Prize, its selection as a finalist in the "Protect and Restore Nature" category significantly elevated its international profile. The recognition ultimately paved the way for a €24.3 million Series B funding round, announced in early 2025. Led by Just Climate, EDF Pulse Ventures, and the Monaco ReOcean Fund, the investment will drive development of NatureMetrics' advanced biodiversity tools, including its AI-powered Nature Intelligence Platform.

The 2024 Earthshot Prize ceremony took place in Cape Town, South Africa, in November and was broadcast to a global audience of millions.

Alongside this global momentum, the company remained closely connected to its local community. In 2024, NatureMetrics hosted student career tours to inspire future talent and played a key role in the Park's Environmental, Sustainability, and Governance (ESG) group—sharing expertise to support tenants on their own sustainability journeys. Its partnership with the University of Surrey also deepened, as the company collaborated with the Institute for Sustainability to deliver hands-on eDNA workshops for primary school children at Winchester Science Centre.



eDNA in Focus: How a University and Industry Partnered to Map Campus Biodiversity

In June 2024 as part of a collaboration with students and researchers at the University of Surrey, NatureMetrics completed eDNA sampling of the ponds at the University's Stag Hill Campus. The infographics below the innovative and creative way NatureMetrics presents scientific data on species detected in samples. The chart shows taxonomic relationships for species, with the names on the same branch more similar than those on different branches. The chart above shows taxonomic relationships for species.

“

The impact of biodiversity loss is undeniable, yet it's often overlooked in business strategies. Now, with evolving regulations and a growing understanding of nature-related risks, companies can no longer afford to ignore their impact on ecosystems.

”

Dimple Patel, CEO, NatureMetrics

Supporting Sustainable Business: Engagement and Action at Surrey Research Park

Surrey Research Park's Communications and Engagement Team was newly established in February 2024 to help businesses unlock the value of being part of a collaborative innovation community. Within months, the team had launched a series of impactful sustainability initiatives that supported both individual action and collective progress.

One of the first activities was to sponsor Climate Habits, a company in the Park's SETsquared Surrey business incubator, to deliver an evidence-based behaviour change programme to the Park community.

Thirteen participants from eleven companies joined the programme in April, gaining practical tools to support low-carbon decision-making. Rather than sharing information alone, the programme combined behavioural theory, coaching, user-friendly tech, and impartial guidance to encourage long-term habit change.

Then in late spring, the team launched the Environmental, Social and Governance (ESG) Working Group to bring businesses together around shared environmental goals. Designed to support organisations of all sizes, the group provides a platform for best practice sharing, peer learning, and collaborative action. For smaller companies, this means access to resources and insight that supplement in-house capabilities.

In its first year, the group focused on several priority areas including air quality, sustainable travel, waste reduction, and charitable engagement. Activities included exploring local air quality targets with support from the University of Surrey, promoting the Guildford Library of Things, and coordinating efforts to rehome unused equipment between companies to reduce waste and make savings.



Members of the ESG Group include:

- BAE Systems
- DiscoverIE
- Eseye
- Future Biogas
- Institute of Sustainability
- ipTEST
- Love Struck
- MedPharm
- Minted Box
- NatureMetrics
- Ricardo
- Royal Surrey NHS Foundation Trust
- SATRO
- Techdow
- Angle

Into 2025 and beyond, the group aims to build on this foundation, involving more of the Park community to deepen its collective environmental and social impact while strengthening alignment with governance best practices.



Future Biogas helped redefine the role of green gas in the UK's energy landscape in 2024, marking a breakthrough year for collaboration, scale, and innovation.

Established in 2010 and headquartered at Surrey Research Park, the company has steadily grown into one of the UK's leading anaerobic digestion (AD) operators, championing new approaches to sustainable biogas production.

A major focus during the year was its involvement in a UKRI-funded research project led by the University of Surrey, supported by a public investment of £1,436,523. Running from April 2023 to March 2025, the two-year initiative saw Future Biogas join a collaboration that included Rolls Royce, Siemens, and several AD industry representatives. The project aimed to apply artificial intelligence to some of the most persistent challenges in anaerobic digestion, unlocking new flexibility and efficiency in biogas production.



Anaerobic digestion, which breaks down organic waste to produce renewable gas, had already been contributing to UK emissions reductions, but remained constrained by the need for highly consistent feedstocks. This limited commercial flexibility and left many waste streams underused. During the project, researchers and engineers developed

decision-making tools including a hybrid digital twin of biodigesters and real-time optimisation models to track both economic and environmental performance. By improving predictive power across highly variable inputs, these tools offered the potential to make anaerobic digestion more scalable, responsive, and aligned with the UK's Net Zero goals.

The company also commissioned the UK's first unsubsidised biomethane plant at Gonerby Moor, Lincolnshire, in collaboration with AstraZeneca, helping the pharmaceutical company reduce emissions by 18,000 tonnes of CO₂ equivalent each year. The 15-year agreement between the two organisations saw Future Biogas supply 100 GWh of renewable gas annually to support AstraZeneca's decarbonisation goals. That project, along with its wider sustainability model, earned Future Biogas the prestigious Sustainability Award at the REA British Renewable Energy Awards.

The company further expanded its production capacity by acquiring a controlling interest in six gas-to-grid sites, adding 333 GWh to its annual output. While a boost of £35 million from RWE Energy Transition Investments, which acquired a 23% stake, added further momentum.

The company also maintained a strong focus on community impact. In 2024, it contributed a record £61,000 to initiatives supporting education, sustainability, and social wellbeing. It also received targeted support from the University of Surrey's SME Voucher Scheme, helping to further embed the business within the regional innovation ecosystem. Throughout the year, the team at Future Biogas also hosted several graduate visits at their Surrey Research Park HQ, connecting with top talent and inspiring the next generation of biofuel specialists.

“

With the launch of Moor Bioenergy – the UK's first unsubsidised biomethane facility in partnership with AstraZeneca – we are proving that innovation and bold vision can drive real change. This project is not only about generating clean, renewable gas, it's a powerful call to all companies to decarbonise industrial gas and heat use.

”

Philipp Lukas, CEO of Future Biogas

NuKoKo



Nukoko

In a year that marked its transition from pioneering food innovator to commercial scale-up, Nukoko secured €1.3 million in funding, expanded its production footprint at Surrey Research Park, and entered a strategic partnership with global ingredients leader Döhler.

All of these accomplishments were driven by the team's mission to solve one of the food industry's most urgent sustainability challenges: creating a future of chocolate without cocoa.

Rising cocoa prices, driven by climate change, crop disease and declining yields in key producing countries, are putting immense pressure on global supply chains and threatening the livelihoods of millions of smallholder farmers.

Nukoko, which has been part of Surrey Research Park's innovative community since 2022, was founded to solve this challenge. Their solution was to reimagine chocolate production through what it calls "Chocolate 2.0" – a pioneering technique that delivers the rich chocolatey taste of cocoa using European-grown fava beans.

The sustainability benefits of Nukoko's products are clear: fava beans grow around the world and support soil health, reduce the need for fertilisers and help mitigate deforestation risks. The company's innovative process also generates up to 90 percent less CO2 than traditional chocolate manufacturing. Additional benefits include a lower risk of child labour, insulation from global commodity price volatility, and reduced sugar content, making it a healthier option.

Founded by second-time chocolate entrepreneurs Kit Tomlinson and Ross Newton, together with Professor David Salt, a leading cocoa research scientist, Nukoko's innovation lies in a proprietary fermentation process. This pioneering technique mimics the flavour development of traditional cocoa fermentation, resulting in a chocolate alternative that behaves like the real thing and integrates seamlessly into existing food production.



“

We are on a mission to make a profound difference and drastically reduce the impact of the chocolate industry on the planet.

”

Kit Tomlinson,
Co-founder, Nukoko

2024 was an important chapter for Nukoko's growth story. In the early part of the year, the company closed a significant seed funding round led by Oyster Bay Venture Capital, with support from SOSV, The Mills Fabrica and Innovate UK. This provided critical backing to scale its proprietary process and accelerate product development ahead of commercial launch.

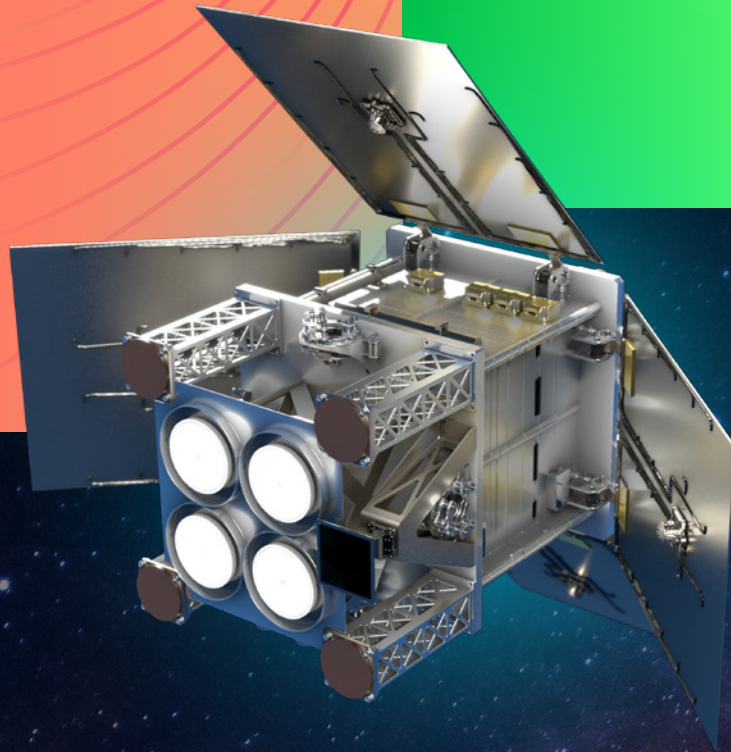
This was reinforced later in the year by a major investment and strategic partnership with Döhler, one of the world's leading ingredients companies. The collaboration will help bring Nukoko's innovation to industrial scale, with production transitioning to 10,000-litre fermentation batches by the end of 2025.

Nukoko's operational growth at its Surrey Research Park headquarters was equally impressive. As the business scaled, the team capitalised on the Park's flexible, customer-focused licensing model to expand quickly and efficiently. In the second half of 2024, Nukoko secured two additional units to accommodate increased R&D and production activity, allowing the company to respond to new opportunities without disruption to its momentum.

Also in 2024, the company was named to the FoodTech 500 and featured in UK's list of 500 most innovative businesses.

With global cocoa supply forecast to decline by 25 percent by 2033, the need for innovation has never been greater. As the chocolate industry adapts to growing environmental constraints and consumer scrutiny, Nukoko is not simply following trends; it's transforming the entire chocolate industry and positively impacting the lives of millions in the supply chain by integrating scientific innovation with sustainable practices to reimagine the future of chocolate for everyone.

➤ Space



Surrey Research Park's space community has long played a vital role in the UK's space sector — but the past year has marked a new phase of momentum and scale. Today, the Park is a thriving 'launchpad' for global businesses, high-growth startups, and established SMEs delivering proven commercial and defence missions.

The arrival of international innovators like Myriota and Ramon Space reflects the Park's growing reputation on the global stage. At the same time, home-grown success stories such as Surrey Satellite Technology Ltd expanded their work with government and defence partners, while BAE Digital Intelligence deepened its space presence in the region with cutting-edge satellite technologies.

New initiatives like Cosmic Capital are supporting the next wave of early-stage businesses, helping them to build investment readiness and secure the funding needed to scale. Plus, the launch of the University of Surrey's JUPITER programme, a dedicated talent pipeline is being developed to meet rising demand for engineers trained in real-world satellite operations.

Together, these developments show how research, talent and commercial opportunity are aligning at Surrey Research Park to unlock opportunities in space. In close collaboration with the University of Surrey, the Park offers pioneering space businesses a uniquely integrated environment that is well placed to give them a competitive edge in the race to commercialise space.

Today, the Park is a thriving 'launchpad' for global businesses, high-growth startups, and established SMEs delivering proven commercial and defence missions.



Myriota

Myriota

In Summer 2024, Australian satellite technology leader Myriota became one of two new space technology companies to establish a base at Surrey Research Park, reinforcing the Park's reputation as a leading destination for inward investment in the space sector.

The arrival at the Park marked a major step in Myriota's global expansion strategy, as the company accelerated its presence in the EMEA region. By locating at Surrey Research Park, Myriota gained a foothold in the UK's burgeoning space innovation ecosystem.

Myriota is transforming Internet of Things (IoT) connectivity with its revolutionary direct-to-satellite technology, offering secure and affordable data transmission anywhere on Earth. Its pioneering nanosatellite network enables low-powered IoT devices and sensors to send data from remote locations, supporting applications as diverse as water quality monitoring and wildlife conservation in Africa.

By establishing its UK office at Surrey Research Park, Myriota has gained direct introductions to the University of Surrey's renowned Surrey Space Centre, the 5G/6G Innovation Centre, and the Surrey Institute for People-Centred AI, as well as participation in Space South Central's regular thought leadership and networking Orbit events.

“

Locating ourselves at Surrey Research Park enables a great opportunity for expansion with the wealth of industry talent in communications and satellite networks available locally.

”

Robert Barnes

Myriota's VP for EMEA.



RAMON.SPACE

Ramon Space

Global space computing leader Ramon Space chose Surrey Research Park as the home of its new UK base, further cementing the Park's role as a magnet for international space investment.

As one of two new international space technology companies joining the Park in Summer 2024, Ramon Space has helped to strengthen our position as a premier hub for advanced satellite technology and commercial space innovation.

Ramon Space, a pioneer in radiation-hardened computing for space missions, develops high-performance computing solutions that power

next-generation satellites and deep-space exploration. Its decision to locate at Surrey Research Park underscores its commitment to the UK's growing space sector and its strategic ambition to expand its European footprint.

The company was quick to establish a relationship with the University of Surrey's Surrey Space Centre, delivering a guest lecture even before setting up at the Park. This early engagement provided the company with direct access to academic expertise, talent, and collaborative research opportunities.

With its expertise in space-based computing, Ramon Space is set to play a crucial role in advancing the capabilities of future satellite missions and supporting the UK's ambitions in commercial and governmental space initiatives.



Cosmic Capital

The Mission

***Cosmic Capital* is a UK-wide pioneering initiative designed to boost investment readiness and connect high-growth space-related science and tech businesses with funding to grow.**

Launched in 2024, the programme is funded by the UK Space Agency was led by the University of Surrey in collaboration with Space South Central and SETsquared.

Based at Surrey Research Park, Cosmic Capital supports 25 founders through targeted training, mentoring, and live pitch opportunities with a curated network of angel and early-stage investors. During the past year, the programme delivered a stellar series of events and activities to boost entrepreneurs' skills and confidence to ultimately help startups secure funding and reach new heights in the space sector.

Meet The Crews: 25 Companies Unlocking the Commercial Potential of Space



The Cosmic Capital programme supports a diverse array of companies exploring and unlocking the commercial benefits of the space domain. These range from businesses using precise GPS data to support Earth-based culture and tourism (GeoTourist) through to AI solutions to support next-generation autonomous spacecraft operations (Space AI UK Ltd).

- Applied Atomics
- AS23.Space Technologies Ltd
- AstroDynamic
- Astron Systems
- AveAlto
- CarbonLaces Solutions
- DeltaWorks

Mission Accomplishments: In Numbers



25

Companies supported by Cosmic Capital



20+

Free business networking opportunities for participants



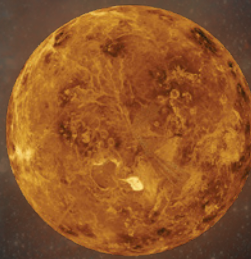
10+

Business workshops delivered, including a session to educate investors about opportunities in the space sector.



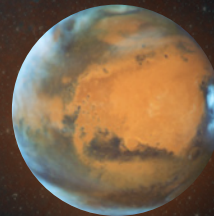
7

Pitching opportunities, including to S100 Club Angel Investment Club and SETsquared Investment Futures 2024.



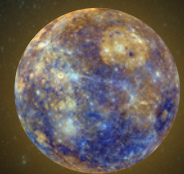
5

Participants successfully raised funds while part of Cosmic Capital



4

Companies connected with the University of Surrey's, Surrey Space Centre SpaceCraft programme.



3

Companies won awards

- DONAA Limited
- Eureco
- Flux Aviation
- GeoTourist
- Growbotics Space Ltd
- Hammer Flights/Missions
- High Temperature

- Material Systems Ltd
- Netzero
- Orbisky
- Polaris
- Satraka Ltd
- Space AI UK Limited
- Space Power

- Stars Edge
- Universal Atmosphere Processing (UAP)
- URA Thrusters
- Visiar Limited
- Xeoverse



JUPITER Programme

Building the Future Workforce for Space

As the UK's space sector accelerates, so too does the need for graduates with real-world, industry-recognised experience. The University of Surrey's new satellite training programme, JUPITER, delivers exactly that, equipping students with hands-on skills in spacecraft design, build and operations.

Co-developed by the University of Surrey with the universities of Portsmouth and Southampton, the programme is designed to support a strong talent pipeline for businesses in the Space South Central regional cluster, ensuring that Surrey Research Park businesses are well positioned to attract and recruit industry-ready specialists in satellite engineering and mission operations.

JUPITER's inaugural mission, Jovian-1, will see students from engineering and physics disciplines working on Earth observation payloads, space debris detection, and communications technology. Once in orbit, students will conduct mission operations from the Surrey Space Centre's ground station, gaining real-world experience in satellite control and data analysis.

The programme responds to the UK space sector's increasing demand for specialist satellite engineering skills, ensuring a pipeline of talent is available to support businesses located at Surrey Research Park and beyond. With more than 170 space-related companies in the Space South Central Regional Cluster, this initiative strengthens links between academia and industry, fostering collaboration and innovation.





Harnessing Space for UK Defence and Security

As space becomes an increasingly contested and strategic domain, UK-based companies are playing a critical role in advancing sovereign capabilities for defence and intelligence. Surrey Research Park is home to leading innovators at the forefront of this shift, developing next-generation satellite systems, Earth Observation (EO) technologies, and real-time data solutions that support national security objectives.

Surrey Satellite Technology Ltd (SSTL)

In November, Surrey Satellite Technology Ltd (SSTL), headquartered at Surrey Research Park, secured a £40 million contract from the Ministry of Defence (MoD) to develop Juno, an advanced EO satellite designed to enhance the UK's Intelligence, Surveillance, and Reconnaissance (ISR) capabilities.

This landmark project, supporting around 200 skilled jobs this win for SSTL highlights the UK's expanding space sector and reinforces Surrey's role as a centre of excellence for space innovation.

Driving the UK's Space Capabilities

Founded as a pioneering spin-out from the University of Surrey, SSTL has revolutionised the space industry by creating affordable and reliable satellite technology for a variety of applications. Now part of Airbus, SSTL continues to drive advancements in EO, communications, and navigation, helping to position Surrey Research Park as a key player in the global space sector.

With Juno, SSTL is delivering next-generation imaging capabilities to the MoD. Once operational, the Juno satellite will provide high-resolution daytime imaging, strengthening the UK's sovereign space capabilities. This technology will support military operations and contribute to national efforts in environmental monitoring, natural disaster response, and climate analysis.

BAE Digital Intelligence

BAE Systems has completed the integration of In-Space Missions into its Digital Intelligence division, solidifying its presence at Surrey Research Park as one of its three strategic locations alongside Alton and Great Baddow. The acquisition has

“

We're incredibly proud that the Ministry of Defence has again placed its trust in SSTL to deliver the UK's next sovereign intelligence, surveillance, and reconnaissance spacecraft.

Juno will offer a step change in imaging capability over Tyche, SSTL's demonstrator spacecraft which launched in August and is now being operated for UK Space Command.

”

Andrew Cawthorne,
Managing Director of SSTL



strengthened BAE's space capabilities, enabling the development of next-generation satellite technology and intelligence solutions.

This integration has positioned BAE Digital Intelligence as a key player in the UK's expanding space ecosystem, alongside the likes of Surrey Satellite Technology Ltd. The company's growing footprint in Guildford provides access to leading academic and industry partnerships, further enhancing its ability to innovate in EO, satellite communications, and defence intelligence.

A notable programme being advanced at the Park is BAE's Azalea satellite cluster, designed to provide the UK with sovereign multi-sensor EO capabilities. This initiative aims to integrate optical, radar, and RF sensing technologies with AI-driven data processing to deliver near real-time intelligence, strengthening national security and defence operations.

The completion of In-Space Missions' integration into BAE Digital Intelligence reinforces Surrey Research Park's role as a critical hub for space and defence innovation.

> Community

Surrey Research Park is a centre of excellence for innovation because of the strength of its community. It is a place where teams thrive and businesses grow, supported by collaboration, diversity and a shared ambition to deliver real-world impact.

Our community extends beyond the Park's physical boundaries. As part of the University of Surrey and a longstanding asset for Guildford and the wider region, the Park's ecosystem of pioneers plays a vital role in delivering positive change locally, nationally and globally.

In 2024, the vision set out the previous year to create the conditions for unprecedented

A Pioneering Community: In June Surrey Research Park hosted the Surrey launch of the King's Awards for Enterprise 2025, the UK's most prestigious business award.

collaboration came to life. As members of Surrey Research Park community, businesses worked more closely than ever with civic partners, underrepresented entrepreneurs and the University to drive innovation and positive change.

The signing of a Civic Agreement between the University of Surrey, Surrey County Council and local universities formalised a joint commitment to improve life across the region by 2030. It placed research, innovation and enterprise at the heart of a stronger and more inclusive local economy.

The Surrey Women's Entrepreneurship Network (SWEN) celebrated its first anniversary, growing to over 350 members and earning international recognition for its early impact. Meanwhile, the University of Surrey was ranked among the UK's top institutions for business collaboration in the 2024 Knowledge Exchange Framework (KEF 4).

At the highest levels, the University of Surrey has designed a bold new long-term strategy to shape the future of its research, education and enterprise activities. At Surrey Research Park, we are excited to see how this Vision 2041 will further strengthen collaboration between the University and our business community.

As you explore the final pages of this publication, consider how your business or organisation could collaborate with the University to unlock new ideas, partnerships and opportunities.





University of Surrey: Vision 2041

The University of Surrey's long-term strategy, Vision 2041, was launched in 2024 with a bold ambition to redefine the University's global impact through transformative research, interdisciplinary collaboration and deep industry engagement.

For the businesses based at Surrey Research Park and in the wider Surrey Innovation District, the strategy looks set to create new pathways to future-ready talent, industry collaborations and partnerships and pioneering innovation that will deliver exciting positive social impact.

Vision 2041 sets out three core pillars:

- Transformative Research and Innovation, Partnerships for Success and Impact Unleashed.
- These themes have immediate relevance for the Park and the wider Surrey Innovation District.
- By committing to major investment in cross-disciplinary research institutes, the University is creating new opportunities for companies to collaborate on commercially focused research and access world-class expertise in areas ranging from AI and robotics to health, space and sustainability.

The strategy also prioritises building stronger bridges between academia and industry. Through a renewed emphasis on co-creation, placement programmes and commercialisation support,

Members of the Park community will be well-positioned to benefit from direct access to emerging talent, student entrepreneurship and knowledge exchange frameworks that are designed to support real-world problem solving.

Of particular interest to the Park are the new institutional priorities announced under Vision 2041, including lifelong health, future of work and space. Each aligns closely with existing sector strengths at the Park and is expected to attract new research funding, high-growth companies and collaborative projects that will benefit prospective and current Park community members.

By aligning its long-term strategy with the needs of industry, the University is reinforcing Surrey Research Park's position as a dynamic, future-facing hub for UK and global innovation and next generation technology.



Civic Agreement

In September 2024, Surrey County Council joined forces with the county's three leading universities: the University of Surrey; Royal Holloway; and the University for the Creative Arts; to sign a new Civic Agreement.

The agreement marks a significant step in deepening collaboration between higher education, local government and communities, with a shared commitment to improving life across the region by 2030.

“
The Civic Agreement is about enabling economic growth and regional prosperity by making the most of the knowledge, talent and facilities in the region and working together to attract investment and new opportunities. The signing of the agreement is clear evidence of the four leaders sharing objectives and aspirations and setting a path for greater collaboration.
”

Caroline Fleming,
Director, Surrey Innovation District



Framed around four key priorities: a sustainable economy; reduced health inequalities; environmental sustainability; and thriving communities, the agreement formalises a joint approach to addressing local challenges and strengthening community outcomes. For the University of Surrey and the businesses based at Surrey Research Park, it highlights the vital role of innovation, research and enterprise in driving regional development.

Supporting Innovative Business

The Civic Agreement places a strong emphasis on strengthening Surrey's innovation economy, outlining new ambitions to support startups, scale-ups and research-intensive businesses. It also highlights the importance of attracting inward investment and working with pioneering companies to enrich the region's innovation ecosystem. For the wider Surrey Innovation District, this commitment offers fresh momentum behind shared goals to build a dynamic, high-value business environment.

The agreement also acknowledges the transformative potential of technologies such as artificial intelligence and data science. Partners committed to ensuring that these tools support the region's strategic priorities, while being applied in a safe, inclusive and impactful way across work programmes, services and public engagement.

At the Civic Agreement launch event, University of Surrey Vice-Chancellor Professor Max Lu joined Councillor Tim Oliver OBE, Leader of Surrey County Council, and other university leaders to champion the value of joined-up action. The event spotlighted projects like the Games and Innovation Nexus (GAIN), which is helping to grow the region's creative and digital skills pipeline.

KEF Report

University of Surrey: Leading the Way in Business Collaboration

The 2024 Knowledge Exchange Framework (KEF 4), published by Research England, confirmed the University of Surrey as a standout performer in business engagement and innovation. The results reflected the University's growing national and regional reputation as a hub for collaborative enterprise and academic excellence.

The University, which owns and operates Surrey Research Park, received the highest rating of 'Very High Engagement' in two key KEF categories: 'Working with Business' and 'IP and Commercialisation'. This placed Surrey well above the national average among its peers and highlighted its leadership across key innovation clusters including space, medicine, AI, sustainability and animal health – all core sectors in the Park community.

The University also performed strongly in the KEF categories of 'Research Partnerships' and 'Working with the Public and Third Sector', reinforcing its reputation as a university that delivers knowledge exchange across a range of sectors and communities.

The IP and Commercialisation rating reflected the University's ability to transform academic research into market-ready ventures. At the heart of this success was the support system provided by the SETsquared Surrey business incubator, based at the Park. Through investor readiness training, mentoring by entrepreneurs-in-residence, and access to incubation space, academics were supported to take their ideas from early-stage concept to investable startup. The University's S100 Club angel investor

network further amplified these opportunities by helping spinouts access critical early funding.

From satellite technology to AI and biotech, the KEF 4 results underscored the University of Surrey's role in fuelling enterprise across the Southeast and beyond.



By providing the infrastructure, networks and expertise needed to turn knowledge into action, Surrey continues to drive economic growth and support the ambitions of the businesses within its ecosystem.



SWEN

One Year of Empowering Women Entrepreneurs in Surrey

In its first 12 months, the Surrey Women's Entrepreneurship Network (SWEN) grew into a vibrant community of more than 350 members.

Established in November 2023 by Surrey Research Park, SWEN was created to meet the need for a dedicated space where women founders across the Surrey Innovation District could connect, share knowledge and grow their ventures. It has since become a trusted platform for collaboration, peer support and opportunity.

During 2024, SWEN championed women entrepreneurs through a programme focused on building confidence, improving access to funding, encouraging mentorship and advancing UN Sustainable Development Goal 5 on gender equality.

The network delivered a variety of initiatives, including Mastermind sessions with experienced entrepreneurs, life coaches and academics, a co-hosted panel with the University of Surrey on workplace gender equality, and two Coffee Break video conversations spotlighting members' experiences.

In November, SWEN marked its first anniversary with a flagship event attended by around 150 members. Highlights included a keynote from Dragon's Den entrepreneur Lottie Whyte, a reverse pitching session with angel and VC investors, a panel on alternative funding, and an honest conversation with women founders who had taken the leap into entrepreneurship.



SWEN one year on:

In November, women founders, aspiring entrepreneurs and their supporters from across the Surrey Innovation District came together in Guildford to celebrate the first anniversary of SWEN.



SWEN's impact was recognised internationally with a nomination for the IASP Inspiring Solution Award, acknowledging its role in building a more inclusive and supportive entrepreneurial ecosystem.

Looking ahead, the network will continue to expand its reach, deepen engagement and support more women-led ventures across Surrey.



Purple Plaque Winner: Recognising Women's Innovation and Impact

In 2024, Dr Alison Callwood, founder of Sammi-Select and an early champion of the Surrey Women's Entrepreneurship Network, was awarded a prestigious Purple Plaque by Innovate UK's Women in Innovation programme.

The award recognises Alison's work as a woman entrepreneur tackling bias in recruitment through Sammi-Select, an online interview and assessment platform designed to support neurodivergent candidates.

Alison is also a senior lecturer in Integrated Care (midwifery) at the University of Surrey and co-founder of Tech4Good.

Sammi-Select is a member of the SETsquared Surrey business incubator at Surrey Research Park, where the team receives mentoring, investor readiness training and access to a collaborative startup community.

Alison joins fellow Park-based Purple Plaque innovator and entrepreneur Dr Anna Vartapetian founder of Securium (see page 23), who received the prestigious award in 2023.

Talent

A thriving innovation community and ecosystem needs more than ideas, investment and infrastructure – it needs skilled people.

That's why Surrey Research Park's Communications and Engagement Team launched a Talent Pipeline initiative in 2024. This is a collaborative working group that connects forward-thinking Park companies with the University of Surrey to support future workforce planning and provide the university with valuable real-world insights.

Connecting talent and ambition with opportunity

Led by the Surrey Research Park team, our student tours are designed to build meaningful links between the region's future talent and the 200+ pioneering businesses based here.

These visits help students gain early familiarity with the sectors, brands and employment opportunities that exist across the Park. For Park businesses, it's a chance to stand out by inspiring the next generation and building visibility among tomorrow's workforce.



Students from the University of Surrey discover more about the innovative work of Park companies.

In 2024, the initiative laid the groundwork for a long-term approach to skills development and workforce planning. Regular working group sessions brought together Park business leaders and University guests to explore a wide range of themes, from addressing current skills shortages to strengthening the STEM talent pool and embedding industry insight into academic programmes.

Member companies benefit from early visibility of student and graduate opportunities, direct links to emerging talent, and a platform to influence the curriculum in areas aligned with their business needs. It is also a space to share best practice on recruitment, training and onboarding. Topics have included the use of student placements, postgraduate researcher talent, and student teams tackling real-world business challenges.

One of the resources introduced to Park businesses through the group was the University's B-clinic, launched in 2024. The B-clinic offers a range of collaborative opportunities for businesses to engage with students through dissertation and consultancy projects, business plan development, marketing strategy support and MBA-led strategic analysis. Designed to help address operational challenges and explore market opportunities, it also gives students valuable experience in applying their learning to live business contexts. Park companies were invited to explore how this model could support their future innovation and skills needs.

Crucially, the Talent Pipeline initiative supports broader ESG goals by encouraging collaboration on outreach activities that inspire young people to consider careers in STEM. It also contributes to the University's employability and careers strategy, with the Head of Engagement at the Park acting as a key link into the University Employability Forum.

As the initiative continues to gather pace into 2025, it is helping to shape a dynamic, future-ready workforce that supports innovation-led growth across the Park and the wider Surrey Innovation District Ecosystem.

Unlock Competitive Advantages with University of Surrey Collaborations

Collaborating with the University of Surrey can give your company a competitive edge by enabling access to top-tier academic expertise and world-class facilities. We offer several partnership opportunities to help Surrey Research Park and Surrey Innovation District businesses of all sizes and sectors.

These are designed to help businesses accelerate their research and innovation and stay ahead in a fast-paced market.

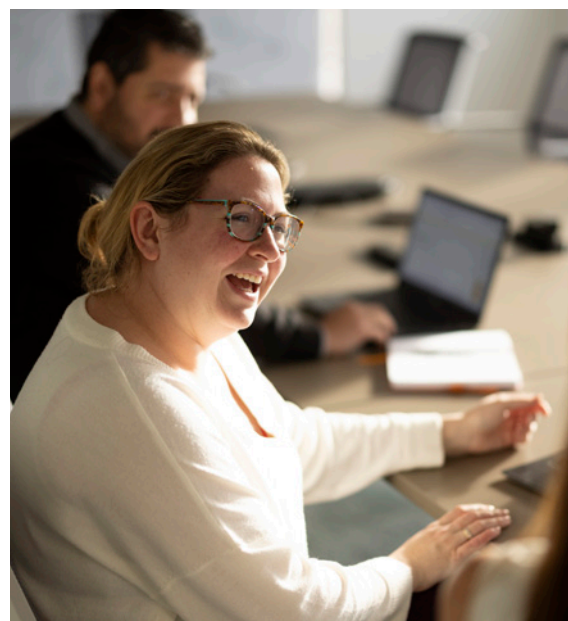
To find out more about collaboration opportunities available to Surrey Research Park community members, visit: surrey-research-park.com/collaborate

➤ Contract Research / PhD Studentships

- Access high-level skills and innovative thinking from PhD and early career researchers.
- Engage in collaborative projects with the potential for your business to retain created intellectual property.
- Benefit from fresh perspectives to solve your challenges and drive your business forward.

➤ Knowledge Transfer Partnerships (KTP)

- Duration: 12 to 36 months, tailored to business needs.
- Collaborate with a university-linked recent graduate or postgraduate to work on your business challenges.
- Includes expertise from senior academics, the associate's employment cost, mentoring, and access to the University's facilities.



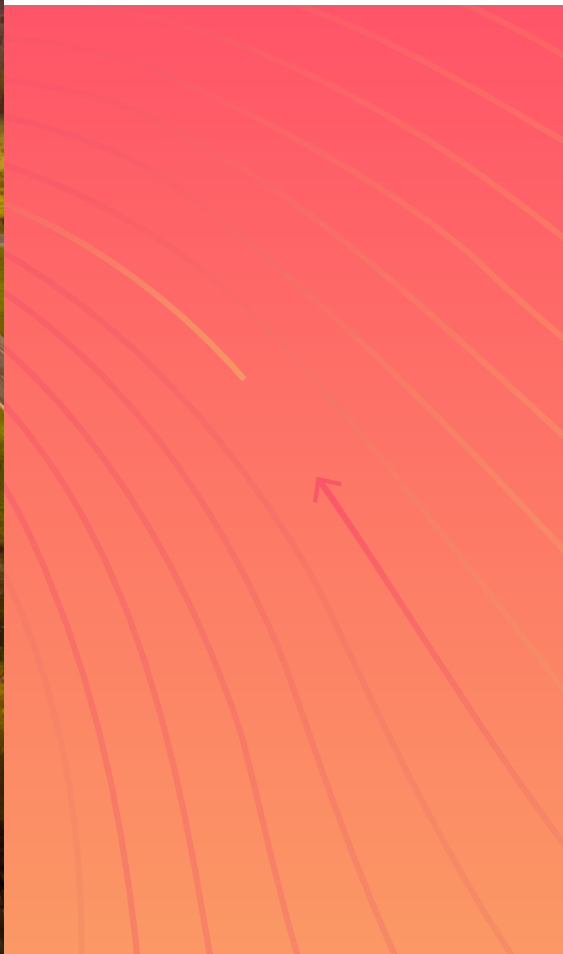
➤ SME Innovation Voucher Scheme

- Access vouchers valued between £5,000 and £10,000 to address significant challenges via academic expertise or advanced facilities.
- Tailored for UK-based SMEs to foster innovation and growth through academic collaboration.

➤ Access to Technical Facilities

The University of Surrey can support your business with access to a range of advanced facilities to help you achieve your goals. Whether you're looking for fast prototyping, construction, testing or evaluation, there are a range of ways to collaborate with the university. From modern engineering services in our Faculty of Engineering and Physical Sciences workshop through to highly specialised equipment available via our Surrey Space Centre, plus much more.

Visit: surrey-research-park.com/collaborate



For further details please contact:

Surrey Research Park Office,
The Surrey Technology Centre,
40 Occam Road, The Surrey Research Park,
Guildford, Surrey, GU2 7YG

W: surrey-research-park.com

✕ @SurreyRP

@SurreyRP

 Surrey Research Park